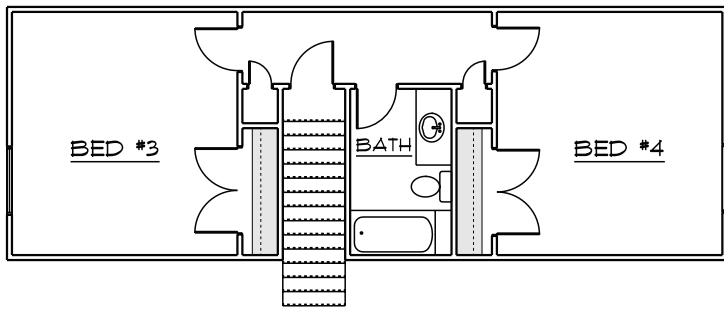


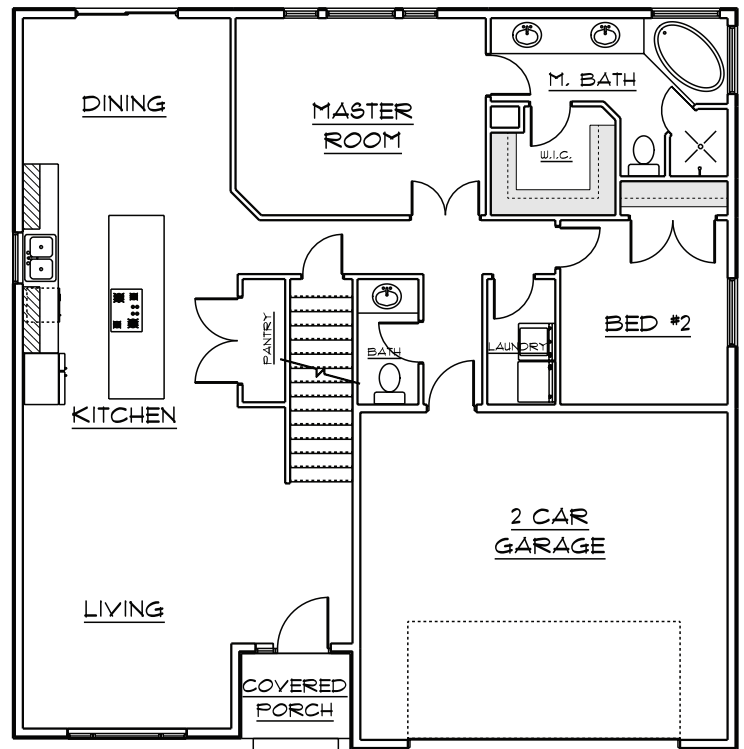
MASIE

Finished Sq. Ft 1971 - Total Sq. Ft: 3326
Beds 4 - Baths 2.5 - Width 40 ft.- Depth 48 ft.

UPPER FLOOR



MAIN FLOOR



OQUIRRH MOUNTAIN RANCH



THE
BUILDING GROUP

www.rdmidah.com