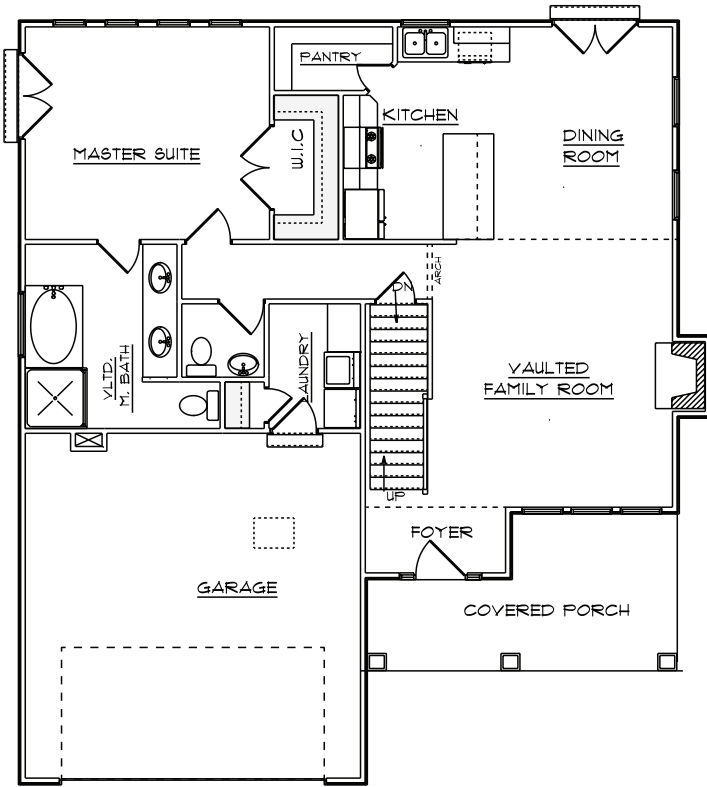


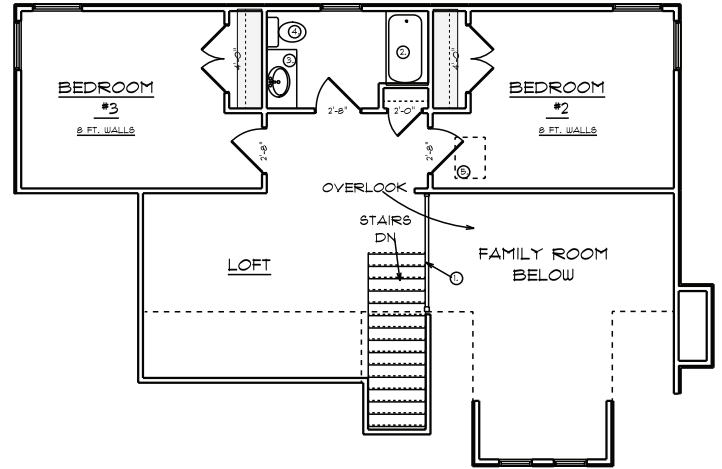
LIAM

Finished Sq. Ft 2100 - Total Sq. Ft: 3400
Beds 3 (option 4 or 5)- Baths 2.5 - Width 40 ft.- Depth 46 ft.

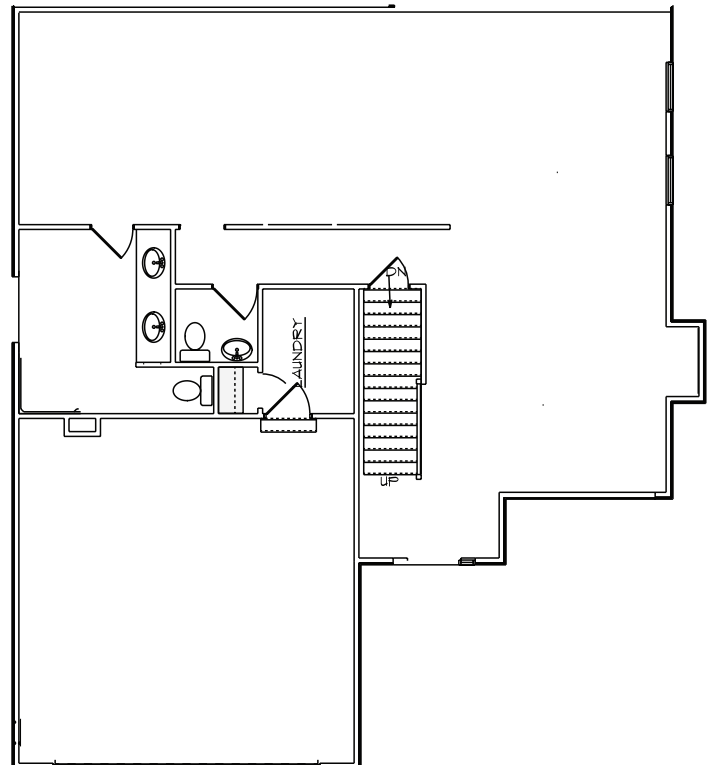
MAIN FLOOR



UPPER FLOOR



BASEMENT



OQUIRRH MOUNTAIN RANCH



THE
BUILDING GROUP
www.rdmurah.com