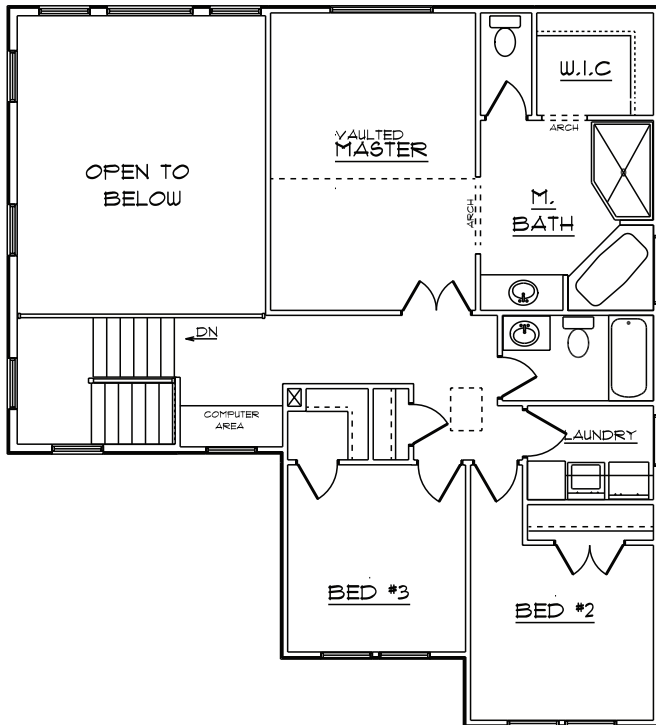


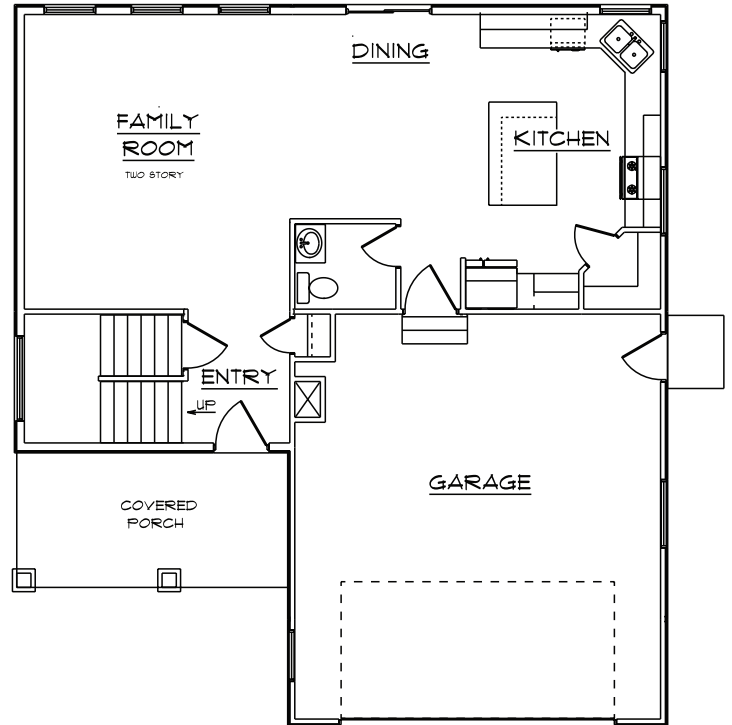
GAVIN

Finished Sq. Ft 1820 - Total Sq. Ft: 2800
Beds 3 (optional 4th) - Baths 2.5 - Width 40 ft.- Depth 48 ft.

UPPER FLOOR



MAIN FLOOR



OQUIRRH MOUNTAIN RANCH



THE
BUILDING GROUP

www.rdmurah.com