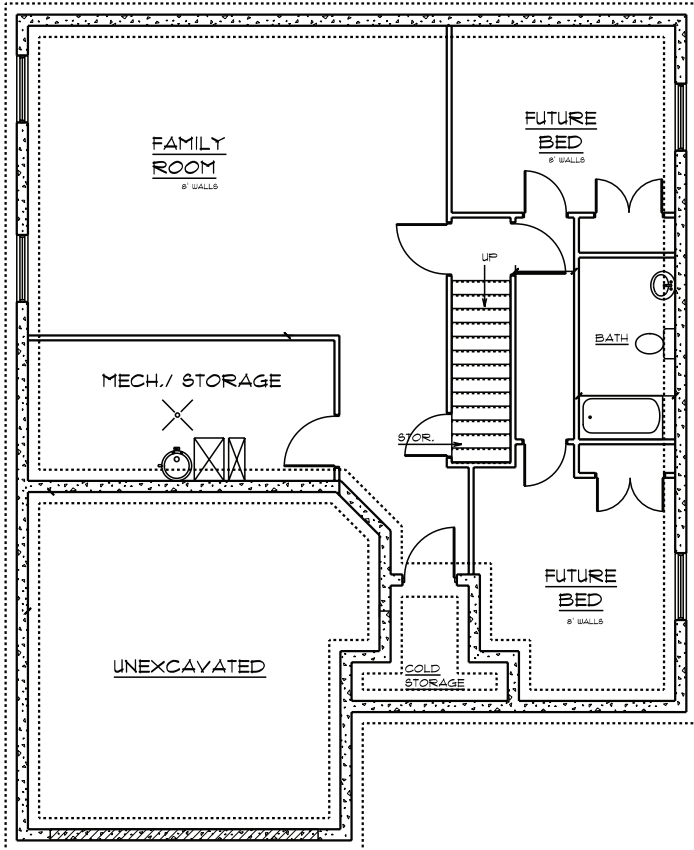


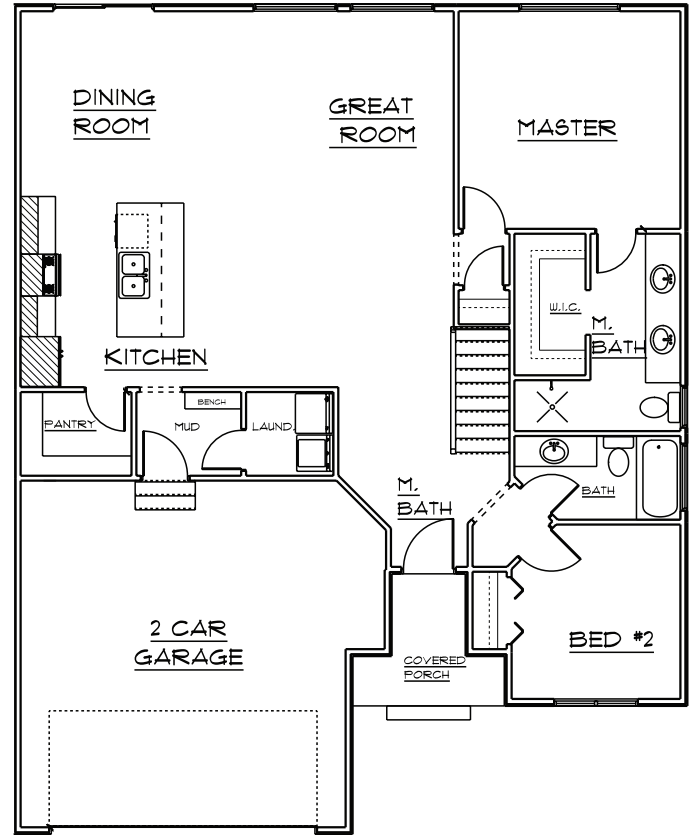
ABIGAIL

Finished Sq. Ft 1365 - Total Sq. Ft: 2730
Beds 2 - Baths 2 - Width 40 ft.- Depth 49 ft.

BASEMENT



MAIN FLOOR



OQUIRRH MOUNTAIN RANCH



THE
BUILDING GROUP

www.rdmurah.com